



South Waikato

Needs Summit 2006



“Focus on Youth”

Held at Te Wānanga o Aotearoa
Tokoroa
10 November 2006



strategic@southwaikato.govt.nz

www.southwaikato.govt.nz

Ph. 07 885 0705

Torphin Cres, Private Bag 7

TOKOROA 3444

Executive Summary

South Waikato's Community Outcomes have been identified through community consultation over a period of several years. Further consultation occurred in 2006 to identify indicators for monitoring progress. During the second half of 2006 these indicators were pulled together into a Draft State of the District Report which highlights current community needs.

The purpose of identifying community outcomes and needs is to promote better co-ordination of community resources within the District.

Approximately 30 people attended the 2006 South Waikato Needs Summit, including young people, representatives from Central Government agencies, faith based groups, Council, schools, social services and community organisations. The Summit had two aims:

- To launch the Draft State of the District Report – South Waikato's Sustainability Indicators - which identifies the current top priorities for the District
- To provide an update on the South Waikato Youth Strategy process and collect additional ideas for turning the Strategy into a reality.

Community and youth ideas from the Needs Summit will feed into the South Waikato Youth Strategy process. The Draft Youth Strategy is scheduled to be ready for public feedback before the middle of 2007.

The Youth Strategy is only one of a number of high-level strategies for realising South Waikato's Community Outcomes. Achieving community wellbeing requires Council, Central Government and South Waikato communities to move forward together. The District is entering a period of growth and prosperity, as thinking and planning over the past several years is beginning to be turned into action.

Further Information

- E-mail: strategic@southwaikato.govt.nz
- Phone: 0-7-885 0705
- Post: Private Bag 7, Tokoroa
- Web: www.southwaikato.govt.nz/communityoutcomes




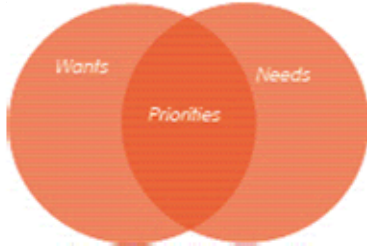

Contents

Executive Summary	ii
Contents	iii
Agenda	1
State of the District Report	1
Youth Strategy – Overview	2
Youth Strategy – Breakout Session	3
Ideas and Solutions – Youth Activities and Facilities.....	4
Ideas and Solutions – Youth Transitions	6
Ideas and Solutions – Promoting Better Outcomes.....	7
Appendix 1 – Youth Activities and Facilities.....	8
Appendix 2 – Youth Transitions	11
Appendix 3 – Promoting Better Outcomes.....	13
Appendix 4 – Attendance List.....	14
Appendix 5 – Background Research Reports	15

Agenda

- 10:10am Welcome – His Worship the Mayor Neil Sinclair
- 10:15am Introduction – David Hammond, Group Manager Community Development
- 10:30am State of the District Report – Paul Killerby, Strategic Policy Manager
- 10:40am Youth Strategy – Amanda Scott, Community Support Manager
- 10:45am Breakout – Ideas and solutions
- 11:45am Summary and close – David Hammond

State of the District Report

<p style="text-align: center;">South Waikato's Sustainability Indicators</p>  <p style="text-align: center;">Draft State of the District Report 2006</p>	<p style="text-align: center;">Circle of Wellbeing - South Waikato vs NZ</p> 
<p style="text-align: center;">Purpose</p> <ul style="list-style-type: none"> • Monitor and review progress • Inform and guide priorities • Improve co-ordination and application of community resources 	<p style="text-align: center;">South Waikato's Community Priorities</p> 
<p style="text-align: center;">Contents</p> <ul style="list-style-type: none"> • Sustainability Indicators • Full Report 300+ pages (available or \$20 from Council) • www.southwaikato.govt.nz/communityoutcomes • Draft until August 2007 to allow feedback • 2007 = latest Census results, Resident Satisfaction Survey, Community Outcomes Survey, etc 	<p style="text-align: center;">Summary</p> <ul style="list-style-type: none"> • "... most of South Waikato's Sustainability Indicators improved between the mid-1990s and early 2000s, but the District is lagging behind the national average..." • 'Top 10 issues' for the District based on community aspirations and evidence
<p style="text-align: center;">Planning for Wants and Needs</p> 	 <p style="text-align: center;">Discussion?</p>

Youth Strategy – Overview

<p style="text-align: center;">Youth Strategy Update</p> <p>Key deliver for Council to initiate the development of a Youth Strategy:</p> <ul style="list-style-type: none"> • Joined up approaches to youth issues • Strengths-based approach to youth development • Above average proportion of young people, including many Māori and Pacific Islands young people • Youth retention issues • 'Boycos' Taskforce for Jobs Youth Guarantee – all young people under 25 years to be in paid work, in training or education, or in useful activities in our communities • Youth voices and participation – including Youth Council 	<p style="text-align: center;">Youth Strategy Update</p> <ul style="list-style-type: none"> • Steering Group meetings • Take account of past youth focused meetings • Stock take of Youth Services in South Waikato • Attendance of Youth in Local Government Conference (September) • Investigations into Youth Council format and structures • Working relationship with Ministry of Youth Development
<p style="text-align: center;">Youth Steering Committee</p> <ul style="list-style-type: none"> • Rautavaara Trust Board • Ministry of Youth Development • Teitoroa High School • Putaruru College • Forest View High • Waikato Youth Warriors Collective • Waikato DHB • TCOSS • Safer Community Council • Council Staff • Mayor Neil Sinclair • Councillor Herman Van Rooijen 	<p style="text-align: center;">Ideas and Solutions</p> <ul style="list-style-type: none"> ➤ Youth transitions ➤ Youth activities and facilities ➤ Youth outcomes

Youth Strategy – Breakout Session

Three of the 'top 10 priorities' identified for the District are youth-related:

- Youth transitions
- Youth activities and facilities
- Promoting better outcomes for youth

Information posters on each of these priority areas were displayed around the room (refer Appendices 1-3). Participants had approximately one hour to discuss these topics and write down their own ideas as input to the Youth Strategy.

Participants discussing ideas around "Youth Activities and Facilities"



Ideas and Solutions – Youth Activities and Facilities

Key question: Some young people have suggested setting up a “youth centre”.... What would this look like – and how to make it sustainable?

Ideas in no particular order....

- Council owned building – separate
- One stop shop (youth centre should be separate)
- A place in town where young people can hang out – sports organised activities, café, art display etc – Free
- Youth Centre not to be called “Youth” Centre
- Umbrella organisation – Centre then other under it
- Relationship focus
- Community internship programme through DIA for establishing centre
- I don’t believe that the youth should have their own facility but able to use a facility that the community use
- Mentoring programme with contracts that have goals for youth and mentor
- Friday and Saturday starting then progress to more
- Building need buy-in from landlords
- Supervision is crucial
- Has to be free to youth/rangatahi. Activities provided with potential community outcomes
- Arts – channel energy
- Sports recreational – physical
- Youth groups
- After school education classes
- Developing sister communities with youth centre
- Youth creative space
- High youth involvement will allow ownership
- Marshall s building on Swanston Street – central location
- Gold coin donation
- Give the youth members “ownership” and they will respect and look after the premises
- Outside club behaviour criteria for using centre
- Independently run from council but with council support/resourcing etc
- Network as agencies – partnership (pooling resources). Give the youth members “ownership” and they will respect and look after the premises
- Youth Council driven
- Community youth – day or night
- Schools, parents, communication is essential
- Sustainability – holiday programmes and activities
- Needs to be activities based rather than “services” (for problems/issues)
- Ground floor with outdoor space – clearly defined guidelines and expectations around use
- Engage community development and funding advisors from DIA
- Youth driven and owned with a range of opportunities. Accessible to all youth, culturally responsible creative space variety of arts activities, music, visual performances
- Possibly have youth training during the day – like Artmakers Hamilton – school holiday programmes
- User-friendly advocates linking with services, providing support/mentoring etc
- Activities to meet the community outcomes – sport, creativity, education and employment
- Provide a means to harness youth views and wisdom on issues/community concerns
- Funding a major concern – process, length of time
- Youth to be considered resource not problem
- Centre as hub – directed to other areas
- Key guidelines, boundaries while utilising or visiting
- Database with all youth things/stocktake
- Day or night (operating hours)

Additional question: What else?

- Tokoroa Youth Park
- A special school for children dismissed from any school for any reason
- Promote more positive youth successes on a regular basis
- Parents of any wayward child should be analysed to see what caused it and then assisted
- Local day dedicated to youth in South Waikato

Ideas and Solutions – Youth Transitions

Key question: What else could be done to enable smoother transitions from school to work, training or other positive activities?

Ideas in no particular order....

- Graduate targeting for return to district post-training
- A permanent Maori representative on the District Council for each ward
- Work with businesses – skills gap/Apprentices
- An update survey by locals for locals rather than rely on a national survey which is ten years old
- Cadet schemes with business and industry
- Community Internship programme – young people helping voluntary groups
- Create opportunities for promoting local young achievers nationally
- Celebration and profiling of positive role models from region
- Maybe create an industry for our youth to come back so they can use their qualifications here in the district
- Tourism development by Council with a percentage of the workforce catering for the youth as of right
- Sponsor students to attend study and tie them back to Tokoroa to work here for at least two years
- Alternative opportunities – not necessarily within schools
- Bus provided if you have to go to apprenticeships – so they come back here
- Strengthen ongoing schooling for young parents
- Create an environment that encourages peer challenge and personal responsibility
- The construction of a Youth Outward Bound school here in the district as part of the education system before leaving school.
- Providing a service where youth can go to do CVs/Resumes. Support application writing – filling in forms
- Training programmes i.e. trades courses so people don't have to leave Tokoroa to upskill and become disjointed from here.
- Incentives to transition by providing scholarships with support of mentoring
- Have training courses based on the towns industry so this allows youth to be trained into actual jobs

Ideas and Solutions – Promoting Better Outcomes

Key question: What is the most important thing that could be done in the South Waikato to improve outcomes for young people?

Ideas in no particular order....

- Activity centres
- More apprenticeships that might attract and motivate our youth to stay in our district
- Better establishment of tertiary institutions here in Tokoroa
- Positive experience i.e. represent overseas and nationally
- More youth safe and friendly environments
- More business opportunities to offer youth jobs in areas that interest them
- Exposure to positive role models
- Providing co ordination of organisations to achieve outcomes together
- Provision of role models – everyday role models from Committee
- Celebrating success – role models
- Mentoring programmes for youth
- Greater central government participation in local outcomes/processes. Where are they today?

Appendix 1 – Youth Activities and Facilities

What is this about?

- Supporting young people and providing positive activities and outlets is important to a modern caring society. Retaining and attracting families and young people is crucial to the ongoing viability of the District. Some of the biggest issues facing young people in the District according to a 2005 Youth Survey include drugs, gangs, alcohol, bullying and boredom.

Facts and figures

- A 2005 Household Survey of more than 450 residents asked people to rate the strength of activities for youth their town or area. Only 12% rated activities for youth as good or excellent, 29% scored them average, and 38% scored them weak or poor.
- Suggestions by young people to make their towns more exciting include timezone/games arcade, malls, more and better shops, a club/youth centre and other suggestions. Things that young people said they do outside of school include sports, hanging out with friends, work and shopping. Types of activities they feel the District could run for young people included a youth centre, sports days, games place and other suggestions.

Rating of community strengths – Activities for youth 2005

	Good or excellent	Average	Weak or very poor	Not specified	Total
South Waikato District	12%	29%	38%	21%	100%
Tokoroa residents	14%	36%	38%	11%	100%
Putaruru residents	17%	27%	35%	21%	100%
Tirau residents	4%	23%	42%	31%	100%

Source: SWDC Community Outcomes Household Survey 2005

What is being done?

- The South Waikato Safer Community Council is in the process of developing a Youth Services Directory and other youth-focused information. A stock-take of youth services and programmes is also being compiled as part of the preparation of the South Waikato Youth Strategy. This will incorporate information from the South Waikato Safer Community Council, Tokoroa Council of Social Services, Putaruru Youth Matters and other sources.
- Tokoroa young people recently received a community gift in the form of a Youth Park complete with playground and soundshell, which was built over a 72 hour period as part of a television reality series. The launch event in early October 2006 included a mix of national and local performers.
- Council is planning towards the establishment of a Youth Council of young people aged 12-24 to have input to decision-making processes for the District.
- An inter-agency Steering Group was formed in late 2006 to drive the development of the South Waikato Youth Strategy. The Steering Group includes representatives from Council, Raukawa Trust Board, several young people nominated through a youth forum process, South Waikato Safer Community Council, Ministry of Youth Development, Tokoroa Council of Social Services and others. The Steering Group will plan and oversee an inclusive process of consultation during 2006/07 to develop the Youth Strategy and ensure broad buy-in from young people as well as stakeholders including schools and social services.

How do we know when South Waikato is progressing towards...“Young people are actively involved in caring for their environment”?

Results from the June 2006 Indicator Workshops

- Tagging, graffiti, damage, vandalism – general respect + perception of safety – eg older people (people coming onto property). Perception of lack of respect.
- “Caring for the environment starts close to home” – Caring for lawns, no broken vehicles, how the home environment looks.
- Active say in what happens in the community – structures and systems to have more say, eg letters on Talking Poles ignored – need to be more involved, listened to. Feedback from youth participation to youth responsibility – peer pressure etc.
- Anti-litter campaign – from an early age.
- Places where children go – sports grounds, cinema, pools, etc – this is the environment they are interested in – how well are these resourced (sports clubs etc)? Golf clubs, pig hunting, etc – need funding to get kids involved. Social environment.
- Parks/ lakes etc – more clean, upgraded – Dunham’s Park, Lake.
- “Nothing to do” – Need outdoor pursuits centre – snow slope etc (older kids).
- Home environment – violence, drug/ alcohol abuse, sole parents, teen sex.
- Council systems – anything in place? Making a contribution – anything different – actually being heard, suggestions being implemented.
- Funding towards things for youth eg rates. Example: \$4,000 for Youth Strategy is an ‘insult’ – not serious money.
- Publicity (youth/ Council) – explain to ratepayers, so there is support.
- Youth Council – needs to be long-term – commitment forever.
- Young leaders events – prepare for leadership (training).
- Not just the ‘top’ kids – get others all involved.
- Participation in Arbor Day, Clean Streams, Spring Clean – has an impact on kids – need more of these.
- Develop a ‘curriculum’ for environmental education – needs an educational resource – dedicated person – specifically targeted – not just part of the job. Landfill, water, wastewater, activities etc. Education officers, eg Zoo.
- Funding/ resourcing of environmental education.
- Recycling – What incentives are there? Eg refunds – how to get these set up?
- Education.
- Resourcing.
- Young people have shorter timeframe – want it done now.

How do we know when South Waikato is progressing towards... "Young people are provided with constructive activities outside of school"?

Results from the June 2006 Indicator Workshops

- Target 5-20 years – "What's Available".
 - Cinema
 - YMCA
 - Pools
 - Libraries
 - Sports
 - Youth groups
 - Clubs, cubs etc
 - Home entertainment
 - Skateboard ramps
 - Jobs
 - Blue light
- Updated resources (eg Movies).
- Information – What's out there for Youth to do?
- Identify age group needs.
- Providers to give data on participation.
- Use stats provided by eg SPARC.
- Positive marketing (Directory) (JOINTLY) – simplify – easy to find/ read.
- Youth Forum – Needs (want!) Resources.
- Youth Strategy – Leadership/ youth co-ordinator – Measurable Indicators –
- Personal contact (input) – Past Info.

Appendix 2 – Youth Transitions

What is this about?

- The pathway from school to work or further training is a vital step in anyone's lifetime. The 2005 South Waikato Youth Survey identified that 65% of high school students were not intending to live in the District after they left school. Young people said the District "doesn't offer much" and there are better opportunities elsewhere including training, study and better paid jobs.

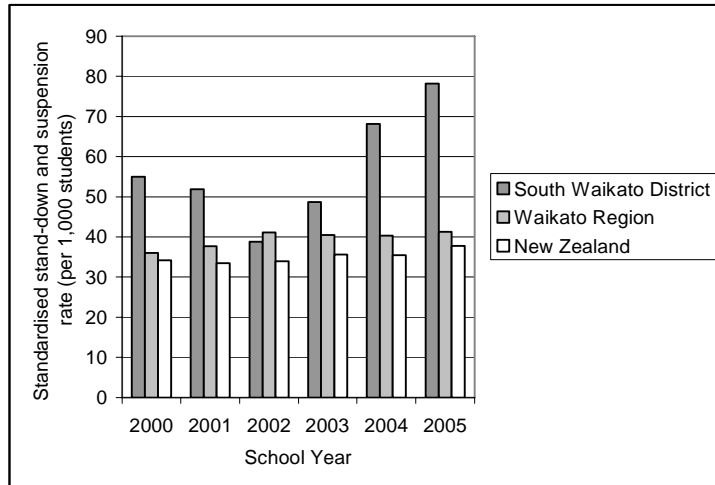
Facts and figures

- South Waikato has almost twice the national average rate of student stand-downs and suspensions. In 2005 there were 380 South Waikato students stood down or suspended, and a further 23 students were excluded from school.
- The proportion of South Waikato school leavers with little or no formal qualifications is above the national average (18.8% compared to 12.9%).
- According to 2001 Census estimates, the proportion of South Waikato young people not in school, work or training is approximately 23% (372 young people) compared to the national average of 17%.
- In the South Waikato Employment Skills Survey 2004, almost 17% of businesses identified job vacancies, most of which were full-time positions. A lack of people with skills and experience was one of the most frequently-cited reasons for staff recruitment difficulties. Employers said the education and training programmes needed to support their business include computer/information technology skills (37%), core skills (36%) and management/business skills (33%).

What is being done?

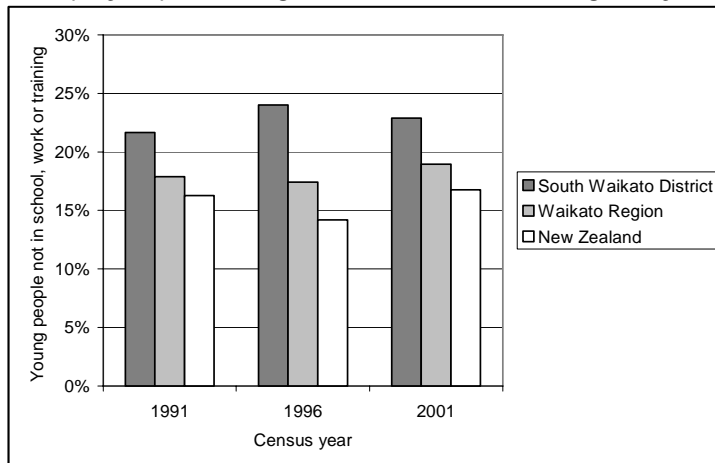
- Ministry of Education reform of District Truancy Services.
- Ministry of Education Gateway Programme, enabling senior secondary students to begin structured workplace learning while still at school. Forest View High School, Tokoroa High School and Putaruru College have each contracted for 35 students during 2006. Industries include hospitality, automotive, retail, tourism, engineering and building.
- Modern Apprenticeships – There are approximately 70 Modern Apprentices in the South Waikato, mostly working in forest industries, agriculture and engineering.
- Industry Training - As at March 2006 there were 1,168 industry trainees in the South Waikato, mostly aged 16 to 20 years.
- Work and Income's new Youth Placement Service.
- Work and Income's new Work Broker in Schools programme.
- Implementation of the South Waikato Employment Skills Strategy, including establishing best practice for careers advisors in schools, creating stronger links between schools and industries, and creating tertiary training courses targeted towards specific industry needs.
- Council is moving towards establishing a cadetship scheme under the Mayors' Taskforce for Jobs.

Age-standardised stand-down and suspension rate per 1,000 students



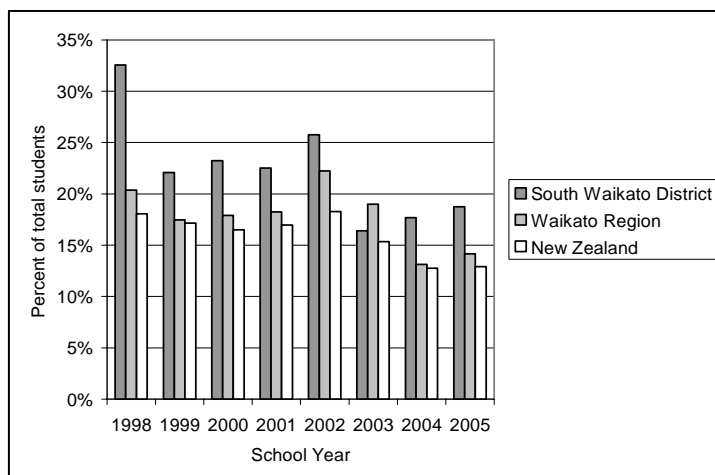
Source: Ministry of Education

Unemployed persons aged 15-19 not undertaking study or training and not at school



Source: Statistics NZ Census

School leavers with little or no formal attainment



Source: Ministry of Education/MSD Social Report

Note: Time series is difficult to assess due to changes in the NZ qualification framework. "Little or no formal attainment" is taken to mean fewer than 14 credits at NCEA Level 1 from 2003 onwards, or less than 12 credits at NCEA Level 1 prior to 2003.

Appendix 3 – Promoting Better Outcomes

What is this about?

- Young people are the District's future. However, according to the results of South Waikato's Draft State of the District Report, three of the top ten issues in the District relate to youth needs. This includes youth transition issues, relatively low rates of educational attainment and high rates of teen parenthood. Addressing youth issues requires an holistic approach focusing on family and community issues, including a focus on reducing disparities between outcomes for Māori, Pacific Islands and other ethnic groups.

Facts and figures

- Data on early childhood education (ECE) attendance by Year 1 students shows that as at 1 July 2005, 87.5% of South Waikato of newly enrolled primary students had attended ECE compared to the national average of 94.3%. Local participation for the Māori ethnic group ranged from 82% to 91% over the period 2000 to 2005, and participation for Pacific Island ethnic groups ranged from 65% to 91% over the same period.
- As at 2001, the proportion of adults in the South Waikato with an educational attainment of at least upper secondary school level was 60.4% compared to 73.4% of adults nationally. Only 43.9% of Māori and 46.2% of Pacific Island adults in the District had an educational attainment of at least upper secondary school level as at 2001.
- Census results show a relatively high rate of teen parenting in the South Waikato. In 2001 there were 117 (7.9%) young parents and partners aged 15-19. Māori young people have almost twice the rate of teen parenthood as non-Māori young people.
- According to Police data there were 211 recorded incidences of family violence in the Tokoroa and Putaruru areas during the year ended June 2006.

Young parents or partners aged 15-19 (% of all 15-19 year olds)

	1991		1996		2001	
	Māori	Non-Māori	Māori	Non-Māori	Māori	Non-Māori
South Waikato District	9.9%	5.9%	14.7%	6.9%	10.1%	6.4%
Waikato Region	9.4%	4.8%	11.6%	5.6%	8.7%	5.0%
New Zealand	9.1%	4.3%	11.0%	4.9%	8.8%	4.2%

Source: Statistics NZ Census

Note: Denominator excludes family role not stated

What is being done?

- Implementation of the Youth Development Strategy Aotearoa
- South Waikato Strategic Youth Co-ordinator
- South Waikato Youth Strategy (forthcoming)
- Work by social services agencies, schools, Government departments, churches, South Waikato Safer Community Council, South Waikato Te Rito Family Violence Coalition and other organisations and groups.

Appendix 4 – Attendance List

Name	Organisation/Group
His Worship the Mayor Neil Sinclair	South Waikato District Council
Wendy Jones	YMCA
Louise Cairney	Department of Internal Affairs
Bryan Haggard	Elim Church
Rebekah (Rhee) Duthie	Ministry of Youth Development
Yvonne Carter	Tokoroa Council of Social Services (TCOSS)
Whiti Kaihau	Ngati Whaita Trust
W. Cook	Pockets 8 Ball Club
Kath More	Te Rangatahi Trust
Adrian Wilson	Community Youth
Laurence Moeke	Cargill School
Colin Bridle	Salvation Army Community Ministries
Joe Tuaiti	N/A
Maraea Nikora	Social Services Waikato/ Waikato Youth Workers Collective
Sonny More	Tokoroa Apostolic Church
Erika Erika	South Waikato Safer Community Council
Saskia Schuitemaker	Arts Waikato
Maree Kendrick	Waiariki Institute of Technology
Brian Fisher	Tokoroa Intermediate
Mereaumate Vano	South Waikato Pacific Island Health Committee (SWPIHC)
Sulita Poraru-Bourne	SWPIHC
Aroha Watene	Tokoroa High School
David Hall	South Waikato District Council
David Hammond	South Waikato District Council
Amanda Scott	South Waikato District Council
Moetu Togia	South Waikato District Council
Paul Killerby	South Waikato District Council
Marion Smith	South Waikato District Council

Appendix 5 – Background Research Reports

South Waikato Research and Consultation

Last updated November 2006

South Waikato District Council has compiled research and consultation information about South Waikato communities over a period of several years. The purpose is to guide planning and decision-making by Council and other agencies.

To download any of the following, go to the Community Outcomes website:
www.southwaikato.govt.nz/communityoutcomes.

Report	Description	Pages
Draft State of the District Report – South Waikato’s Sustainability Indicators 2006	Overview of aspirations and needs in the District, based on progress towards South Waikato’s Community Outcomes	300+
Draft State of the District Report 2006 – Summary	Progress towards South Waikato’s Community Outcomes	40
Community Outcomes Household Survey Results 2005	Household postal self-return survey, N = 465 residents	87
Youth Survey Results 2005	Survey of students at Forest View High School, Tokoroa high School and Putaruru College, N = 490 young people	25
Maori Hui with Council 2005	Hui at Papa o Te Aroha Marae, June 2005	10
Pacific Island Fono with Council 2005	Fono at Saint Lukes Presbyterian Pacific Island Church, June 2005	8
Indicator Workshops Report 2006	Indicator workshops, June 2006, N = 60+	60
Needs Summit 2005	Workshop of individuals and agency representatives, October 2005, N = 40	17
South Waikato Employment Skills Survey 2004	Survey of employers in relation to current and future skill gaps	10
South Waikato Output and Employment Projections 2005	A study by the University of Waikato used as input to the Economic Strategy refresh, to supplement Statistics NZ official projections	51
Community Outcomes Telephone Survey 2003	Telephone survey to identify community visions for the District	167
Resident Satisfaction with Council Activities 1997-2004	Overview of results since 1997 from Council’s Resident Satisfaction Survey	17
Gambling in the South Waikato District: An Assessment of Social and Economic Impacts 2006	Research prepared as part of Council’s 2006/07 Gambling Policy Review	22
Leisure Trends in the South Waikato 1999	An overview of leisure trends in the District, as input to the 1999 Leisure Strategy	47

In addition to the free on-line version, a hardcopy of the State of the District Report (300+pages) can be purchased from Council’s Tokoroa Office for \$20 (Torphin Crescent, Tokoroa, phone 885 0340).



strategic@southwaikato.govt.nz

www.southwaikato.govt.nz

Ph. 07 885 0705

Torphin Cres, Private Bag 7

TOKOROA 3444