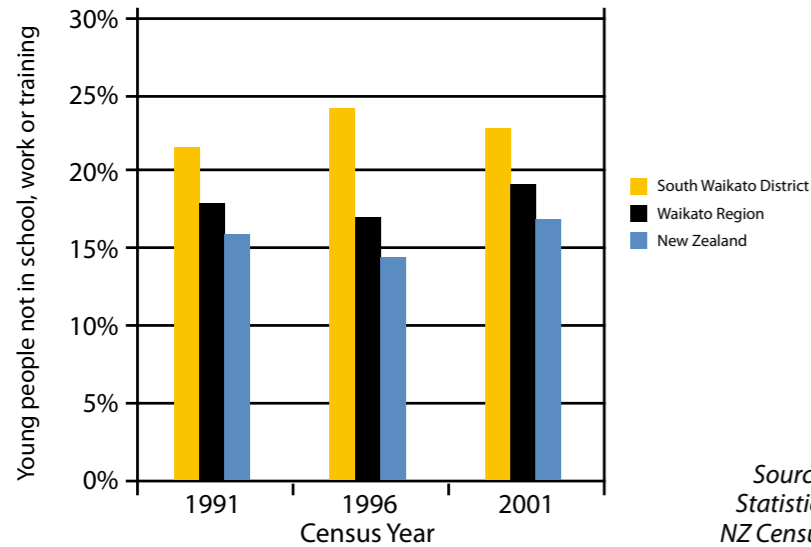


Youth Transitions

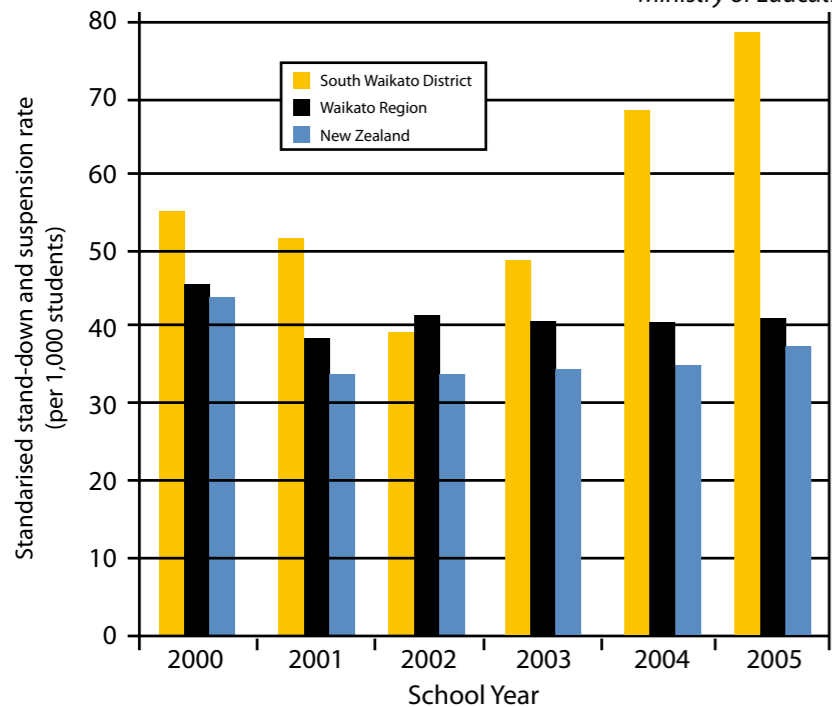
Unemployed persons aged 15-19 not undertaking study or training and not at school



Source: Statistics NZ Census

Age-standardised stand-down and suspension rate per 1,000 students

Source: Ministry of Education



According to Census estimates the proportion of South Waikato young people aged 15-19 who are not in school, work or training decreased marginally to 22.9% (372 young people) in 2001 compared to 24.0% in 1996.

However the rate of young people “falling through the cracks” in the South Waikato remains well above the national average of 16.8%. Initiatives currently under way in the District to improve youth transitions from school to work and training include the Modern Apprentices scheme, Industry Training and the Ministry of Education’s Gateway Programme. In addition, Work and Income recently announced the introduction of a Youth Placement Service at its Tokoroa Service Centre, and is planning a Work Broker in Schools service.

Stand-downs and suspensions

According to 2005 data from the Ministry of Education, the South Waikato District has almost twice the national average rate of stand-downs and suspensions. South Waikato’s rate of stand-downs and suspensions decreased over the period 2000 to 2002 to a low of 184 students (3.7% of total student numbers) but subsequently increased to 380 students in 2005 (7.5% of total student numbers).

Part of this trend may be related to truancy rates. In November 2005 the Minister of Education announced a Reform of the District Truancy Services. The reform is designed to ensure a more equitable and efficient service that supports schools to manage attendance. For further information about the proposed changes in role, funding and structure of the District Truancy Services refer to the Student Attendance Website www.tki.org.nz/r/governance/attendance.

Young parenting

Teenage parenthood can create significant disadvantage for both the young parents and their children. Women who become mothers at a young age are more likely to have reduced educational attainment and reduced participation in paid work.

Census results show that the proportion of South Waikato 15 to 19 years who stated a parent or partner role increased between 1991 and 1996 but subsequently fell again. In 2001 there were 117 (7.9%) young parents and partners aged 15-19 compared with 174 (10.0%) in 1996. However, this is still above the national average. In addition, Māori young people have almost twice the rate of teen parenthood compared to non-Māori young people.

Young parents or partners aged 15-19 (% of all 15-19 year olds)

	1991		1996		2001	
	Māori	Non-Māori	Māori	Non-Māori	Māori	Non-Māori
South Waikato District	9.9%	5.9%	14.7%	6.9%	10.1%	6.4%
Waikato Region	9.4%	4.8%	11.6%	5.6%	8.7%	5.0%
New Zealand	9.1%	4.3%	11.0%	4.9%	8.8%	4.2%

Source: Statistics NZ Census

Educational Attainment

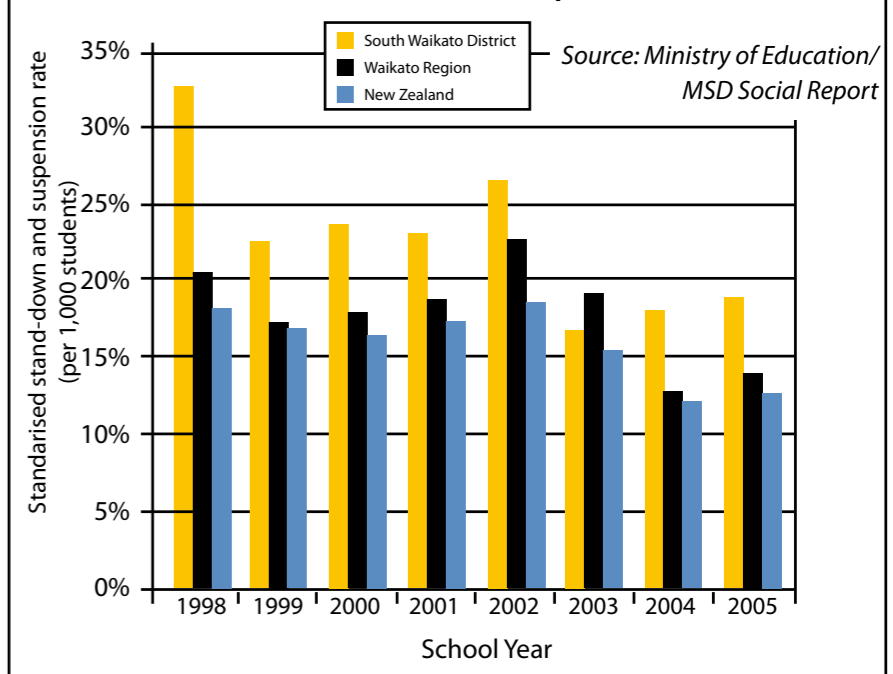
Evidence from New Zealand and overseas shows that early childhood programmes prepare children socially, physically and academically for entry into primary education, and can help

narrow achievement disparities between children from low-income and more advantaged families. Data collected on Early Childhood Education (ECE) attendance by Year 1 students shows that as at July 2005, 87.5% of South Waikato of newly enrolled primary students had attended ECE compared to the national average of 94.3%. Attendance was lowest for Māori and Pacific Islands children.

In terms of school-aged children, the proportion of South Waikato school leavers in 2005 with little or no formal qualifications is above the national average (18.8% compared to 12.9%). Only 59.2% of South Waikato school leavers in 2005 achieved qualifications higher than NCEA Level 1 compared to the national average of 65.6%. According to Census results, the proportion of adults in the South Waikato District with at least upper secondary

school qualifications lags behind the regional and national rates of educational attainment. There is also considerable ethnic disparity, with only 43.9% of Māori and 46.2% of Pacific Island adults in the South Waikato District having an educational attainment of at least upper secondary school level as at 2001.

School leavers with little or no formal attainment



Source: Ministry of Education/ MSD Social Report



the South Waikato...

discover it... live it... love it...™



© Chris Westinghouse

Activities for Youth

The 2005 South Waikato Youth Survey identified that 65% of high school students in Tokoroa and Putaruru were not intending to live in the District after they left school.

Some comments were that the District "doesn't offer much" and there are better opportunities elsewhere including training, study and better paid jobs. Some of the things that young people feel are not cool about the District include "nothing to do", gangs/fights, not enough shops, tagging and other crime. Suggestions by young people that would make their town more exciting included timezone/games arcade, malls, more and better shops, a club

or youth centre and a variety of other useful suggestions.

The 2005 Community Outcomes Household Survey asked respondents to rate the strength of their town or area in terms of activities for youth. The results show that only 12% of South Waikato residents rated activities for youth as good or excellent.

A stock-take of events planned by, for and with young people is currently being compiled. Council is also planning towards the establishment of a Youth Advisory Group/Youth Council and a Steering Group was formed in late 2006 to drive the development of a South Waikato Youth Strategy.

Rating of community strengths - Activities for youth 2005

	Good or excellent	Average	Weak or very poor	Not Specified	Total
South Waikato District	12%	29%	38%	21%	100%
Tokoroa residents	14%	36%	38%	11%	100%
Putaruru residents	17%	27%	35%	21%	100%
Tirau residents	4%	23%	42%	31%	100%

Source: SWDC Community Outcomes Household Survey 2005

Invitation enclosed: South Waikato Needs Summit 2006
**A focus on youth... 10 November 2006...
 BE THERE!**

Interested? Want to know more? Want to be involved?

E-mail: strategic@southwaikato.govt.nz

Phone: 0-7-885 0705

Post: Private Bag 7, Tokoroa

Web: www.southwaikato.govt.nz/communityoutcomes

Community Outcomes Panui

Issue 3
October/November 2006



Introduction

Previous issues of this Panui have introduced South Waikato's Community Outcomes and their emerging role in providing a better basis for local decision making. A series of community workshops was held during June 2006 to brainstorm indicators for measuring progress. Following the workshops a set of 170 Draft

Indicators was distributed for community feedback. Feedback to date has been used to refine the indicator set, including omitting some indicators and adding others. Over the past several months, Council staff have compiled data for approximately 130 progress indicators and identified gaps to be filled over the coming years through community surveys and other methods.

Focus on Youth

The inaugural Draft State of the District Report - South Waikato's Sustainability Indicators - will be launched at a South Waikato Needs Summit on 10 November 2006 from 10am to 12noon. See the loose insert for more information and registration details. This Report shows that most of South Waikato's Sustainability Indicators improved between the mid-1990s and early 2000s, but the District is still lagging on many aspects of social and economic wellbeing.

Many of the key needs in the District relate to youth issues, including youth transitions from school to work and training, addressing our high rate of student stand-downs and suspensions, reducing our rate of teen parenthood, increasing our levels of educational attainment, and enabling better youth engagement in community activities. For these reasons, the 2006 Needs Summit will have a particular focus on youth, including an update and discussion on the South Waikato Youth Strategy process.



INSIDE this issue:

1. Youth transitions
2. Stand-downs and suspensions
3. Young parenting
4. Educational attainment
5. Activities for youth

Insert: South Waikato Needs Summit 2006



the South Waikato...

discover it...
live it... love it...™

Contact details:
 South Waikato District Council
 Strategic Planning Team
 Tel: 07 885 0705
strategic@southwaikato.govt.nz
www.southwaikato.govt.nz/communityoutcomes

Working better together